

5500

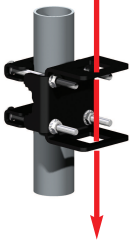
SERIES



Hose not included.

Model 5513

Patented 360° Pivot Design!



Patented Quick-Attach Socket Feature

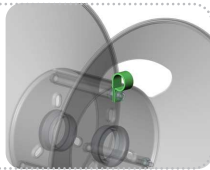
Allows reel to be mounted to, (or removed from), walls or portable pressure washer frames in just seconds! Rapid Reel's mounting brackets enable quick installation to the frames of most major pressure washer brands. See back page for more details.

STANDARD FEATURES

Continued From Previous Page

Loop-n'-Clamp Design

Our innovative method of securing the hose to the reel extends the life of both the hose and reel by protecting the swivel and hose fittings from hard pulls.



Comfort Grip Handle

Riding on a solid steel shaft, this free spinning handle makes rewinding the reel easy. Made from high-strength material, this full-palm handle is virtually unbreakable.



Weather Resistance

With special agents for extreme durability and weather resistance, our powder-coat paint creates a hard, smooth finish that stays attractive for years.

360° Pivot Reels

Offering nine exclusive features, this is the reel that revolutionized the pressure washer industry! Its patented design allows the reel to be attached, or detached, from a wall or pressure washer frame in just seconds. It also delivers a full 360° pivoting action...keeping the reel in constant alignment with the hose.

Technical Specifications

All reels are rated at 5000 PSI and 325° F and have a 2 year warranty

Model 5513

3/8" Capacity100 ft.
1/2" Capacity75 ft.
Ship Wt.33 lbs.

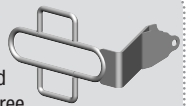
Model 5516

3/8" Capacity200 ft.
1/2" Capacity150 ft.
Ship Wt.35 lbs.

NOTE: Reel capacities may vary depending on hose brand and style.

Hose Guide

Made for left or right-hand operation, the "flip-over" hose guide assists in pulling hose out and reeling it back. Keeps hands clean and injury free.



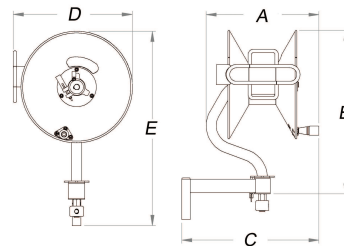
360° Pivot Lock

Locks reel in one of eight positions to keep it from pivoting while rewinding or in transport. Spring-action pin provides easy engagement with simple pull-n'-turn motion.



Steel Pipe Axle

Featuring a schedule-80 steel pipe within the curved 1-1/4" tubular axle, this design is ideally suited for high pressure, high temperatures and 360° pivoting action.



Dimensions

	5513	5516
A	16"	16-3/4"
B	22-5/8"	24-3/8"
C	19-5/8"	20-1/2"
D	13-7/8"	17-1/4"
E	26-1/2"	28-1/8"